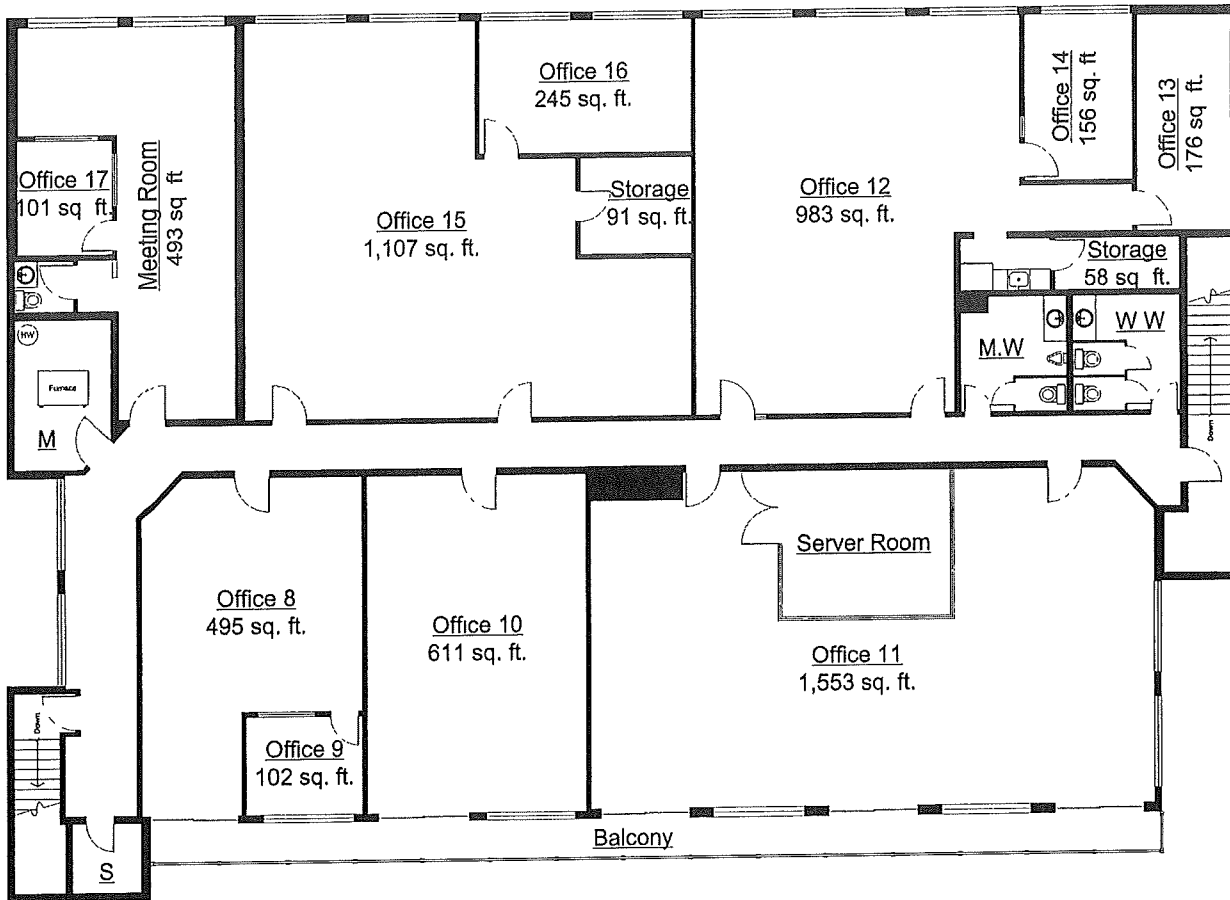
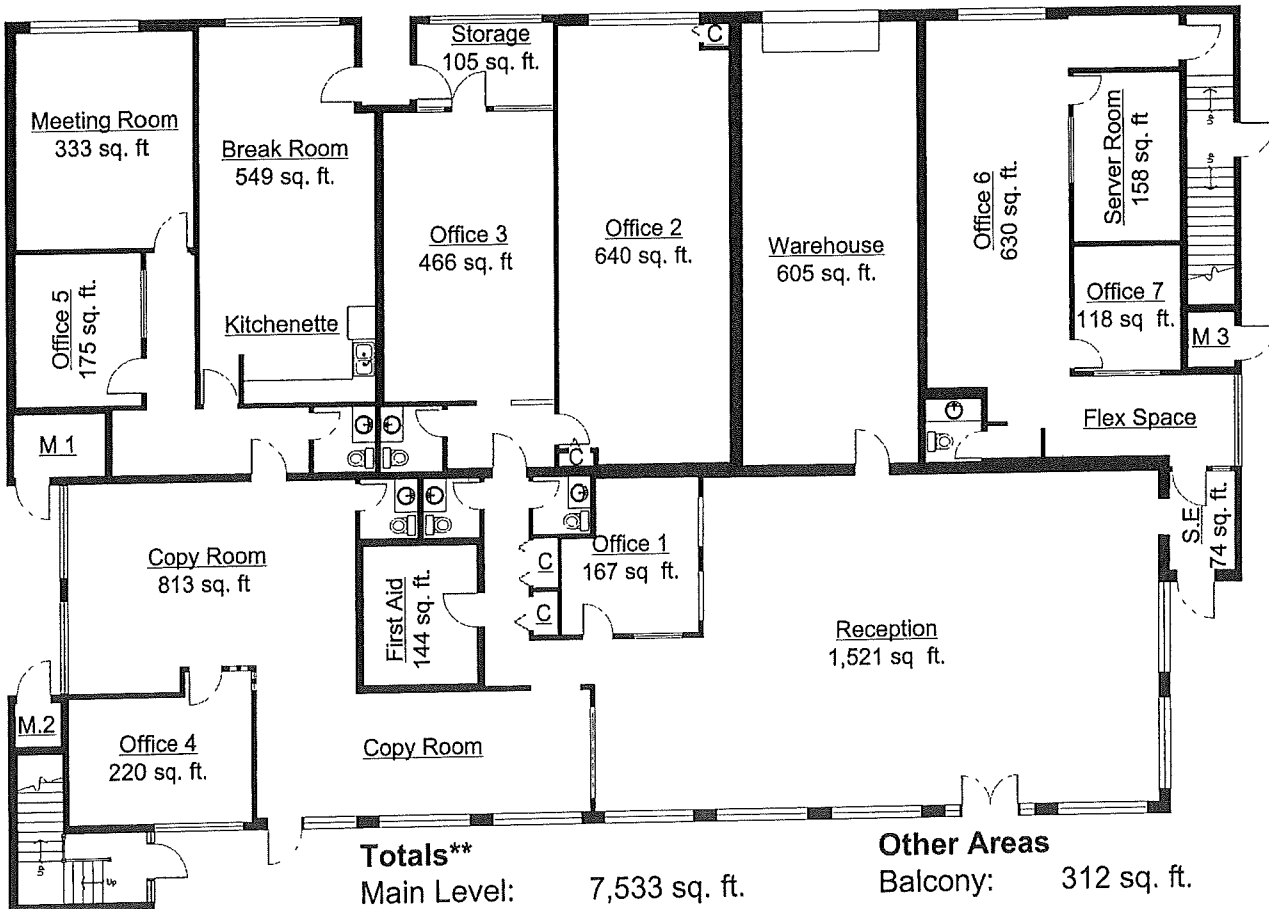


120 176 Street, Surrey

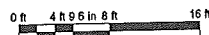


UPPER LEVEL



Totals**	
Main Level:	7,533 sq. ft.
Upper Level:	7,510 sq. ft.
TOTAL:	15,043 sq. ft.

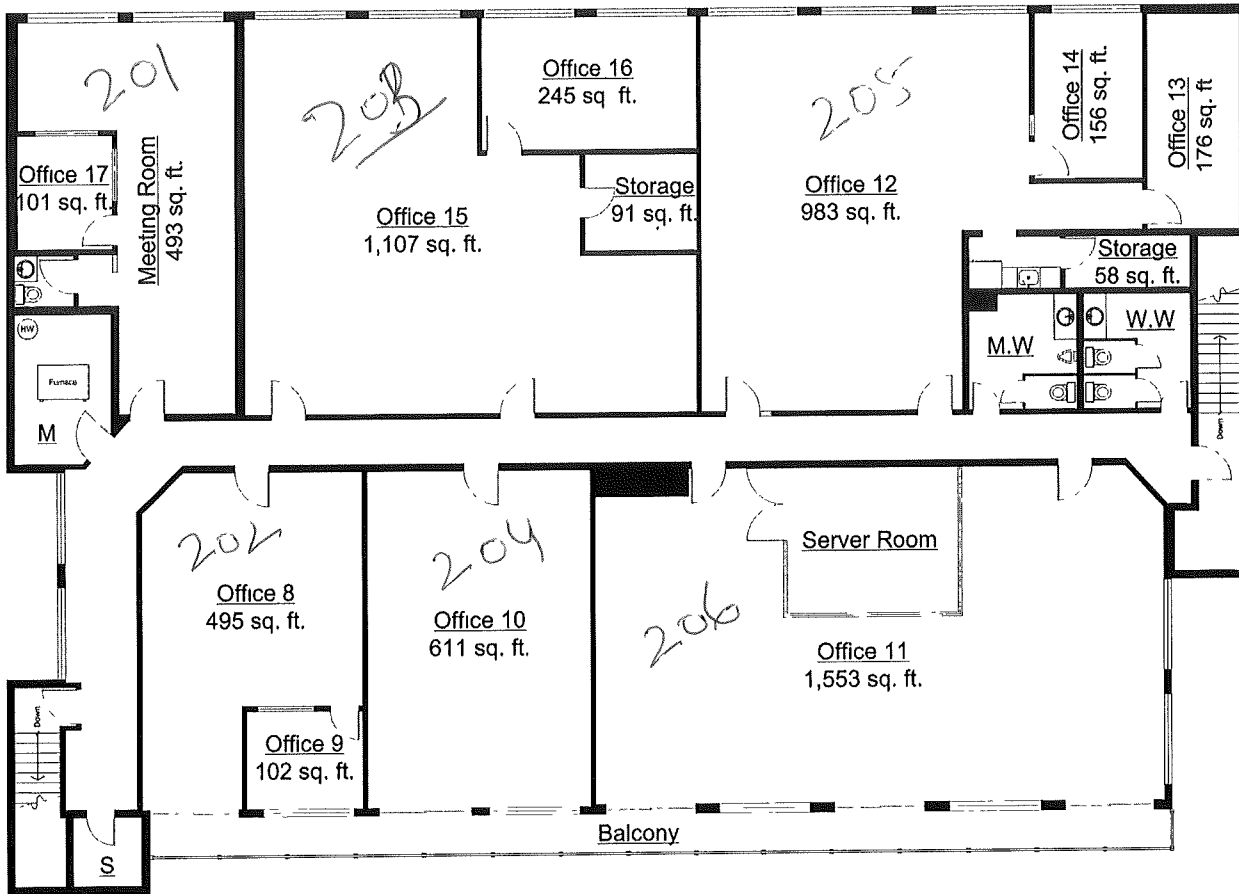
Other Areas
Balcony: 312 sq. ft.



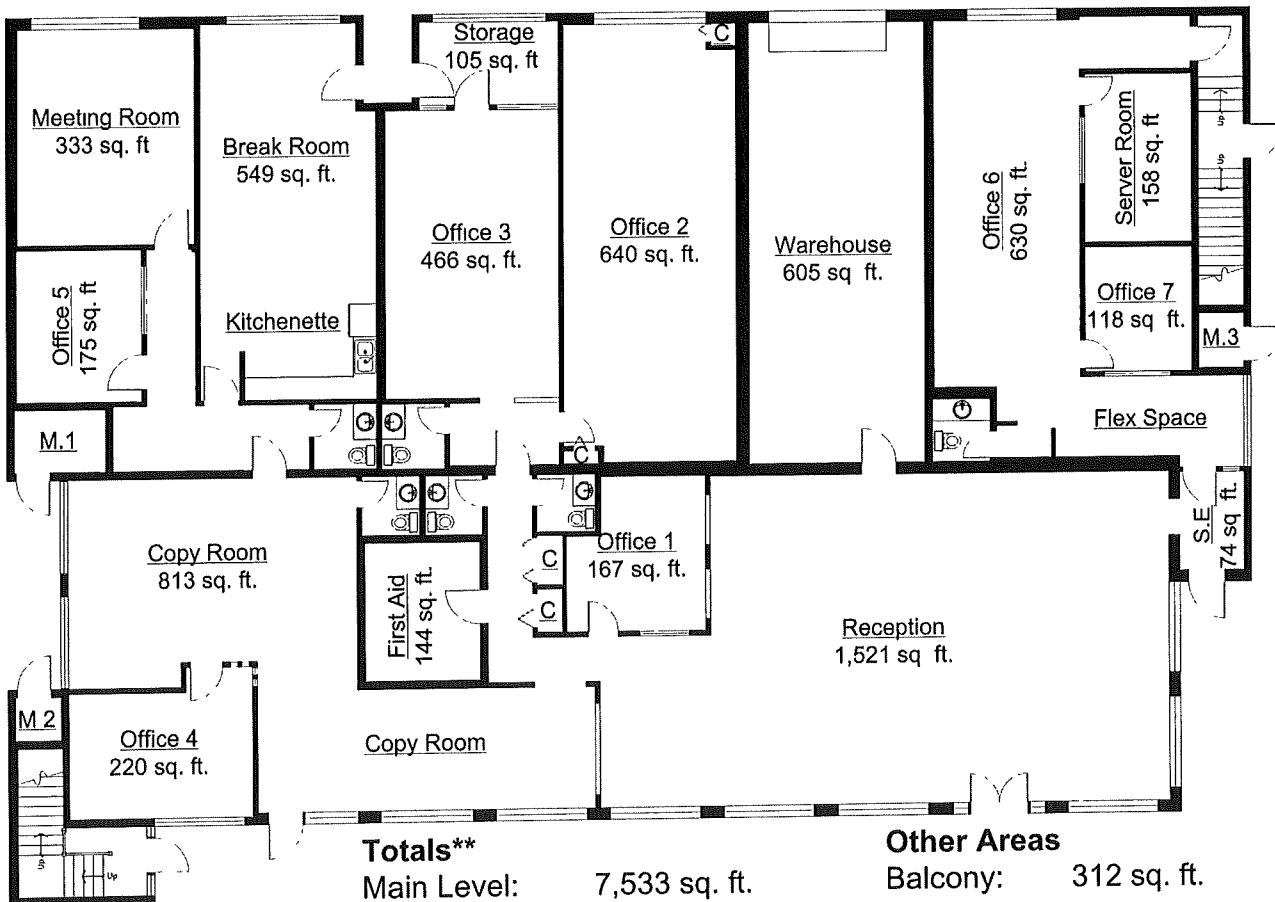
** Approx. based on interior measurements to exterior walls
** Total square footage not taken from original blueprints



120 176 Street, Surrey



UPPER LEVEL



Totals**

Main Level: 7,533 sq. ft.

Upper Level: 7,510 sq. ft.

TOTAL: 15,043 sq. ft.

Other Areas

Balcony: 312 sq. ft.